

6790 FLORIN-PERKINS RD
SACRAMENTO, CA

FOR LEASE
15,477 SF OFFICE SUITE

ETHAN CONRAD
PROPERTIES INC.



FOR MORE INFORMATION CONTACT:

Connor Finch
DRE: #02083873
connor@ethanconradprop.com

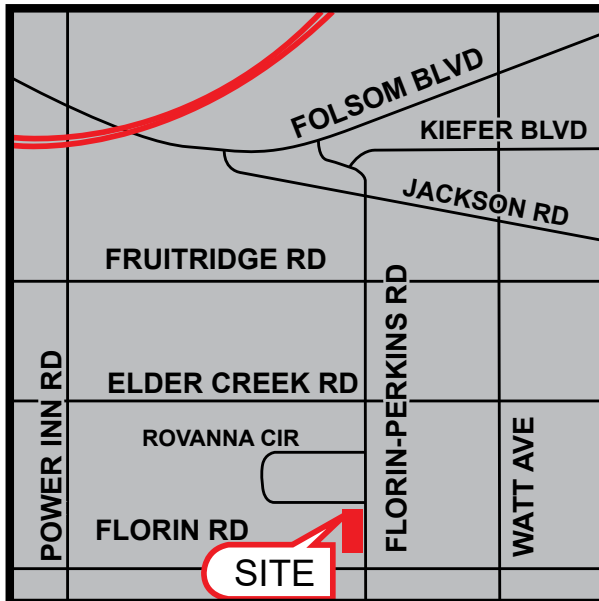
Todd Newburn
DRE: #01226238
tnewburn@ethanconradprop.com

916.779.1000

ETHAN CONRAD PROPERTIES, INC
1300 NATIONAL DRIVE, SUITE 100 | SACRAMENTO CA, 95834 | 916.779.1000
www.ethanconradprop.com

FEATURES:

- Configuration: 23 private offices, a large conference room, a dedicated break room, a server/data room, and a receiving room for light industrial or logistical support.
- Ceiling Height: OfficeT-Bar is a higher than average 10', ideal for office-tech and light industrial use.
- Electrical: Heavy power availability with 600 amp, 120/204 volt, 3-phase electrical service—suitable for advanced tech operations and equipment.
- Parking: Ample parking with 2.9/1,000 SF parking ratio.
- Signage: Monument signage along Florin-Perkins Road offers excellent visibility and branding opportunity.



PROPERTY DETAILS:

6790 Florin-Perkins Rd is a highly functional Office/Tech suite strategically positioned in Sacramento's dynamic Power Inn submarket. This 15,477 SF space offers a professional setting ideal for companies in need of a flexible, tech-ready office environment with industrial support capabilities.

LEASE RATE:

Suite 300: 15,447 SF \$16,837.00 (\$1.09 PSF, MG)



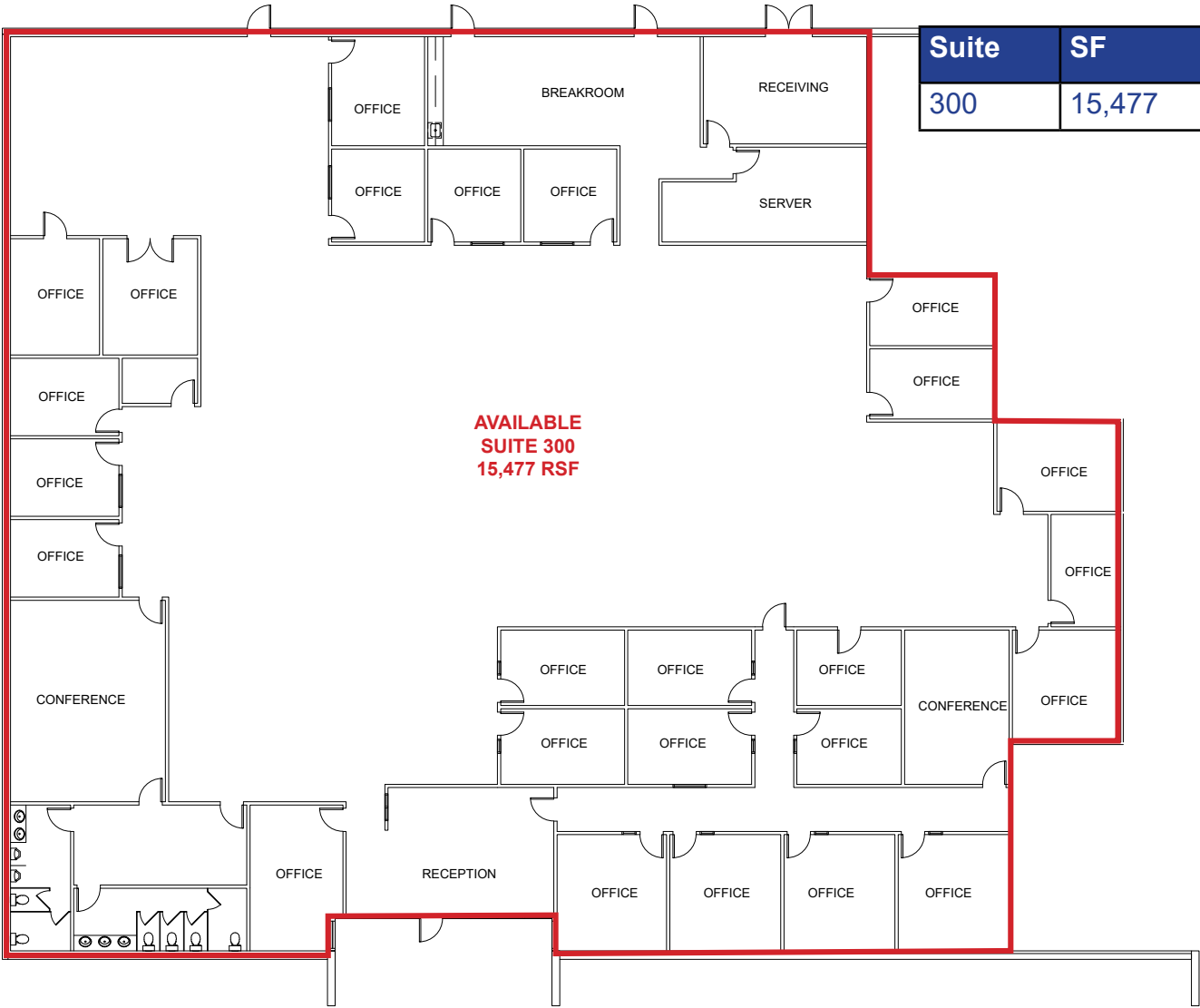
ETHAN CONRAD PROPERTIES, INC.

1300 NATIONAL DRIVE, SUITE 100 | SACRAMENTO CA, 95834 | 916.779.1000

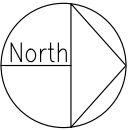
www.ethanconradprop.com

The information contained herein has been obtained from sources we believe to be reliable. However, we cannot guarantee, warrant or represent its accuracy and all information is subject to error, change or withdrawal. An interested party and their advisors should conduct an independent investigation of the property to determine to your satisfaction the suitability of the property for your needs.

FLOOR PLAN

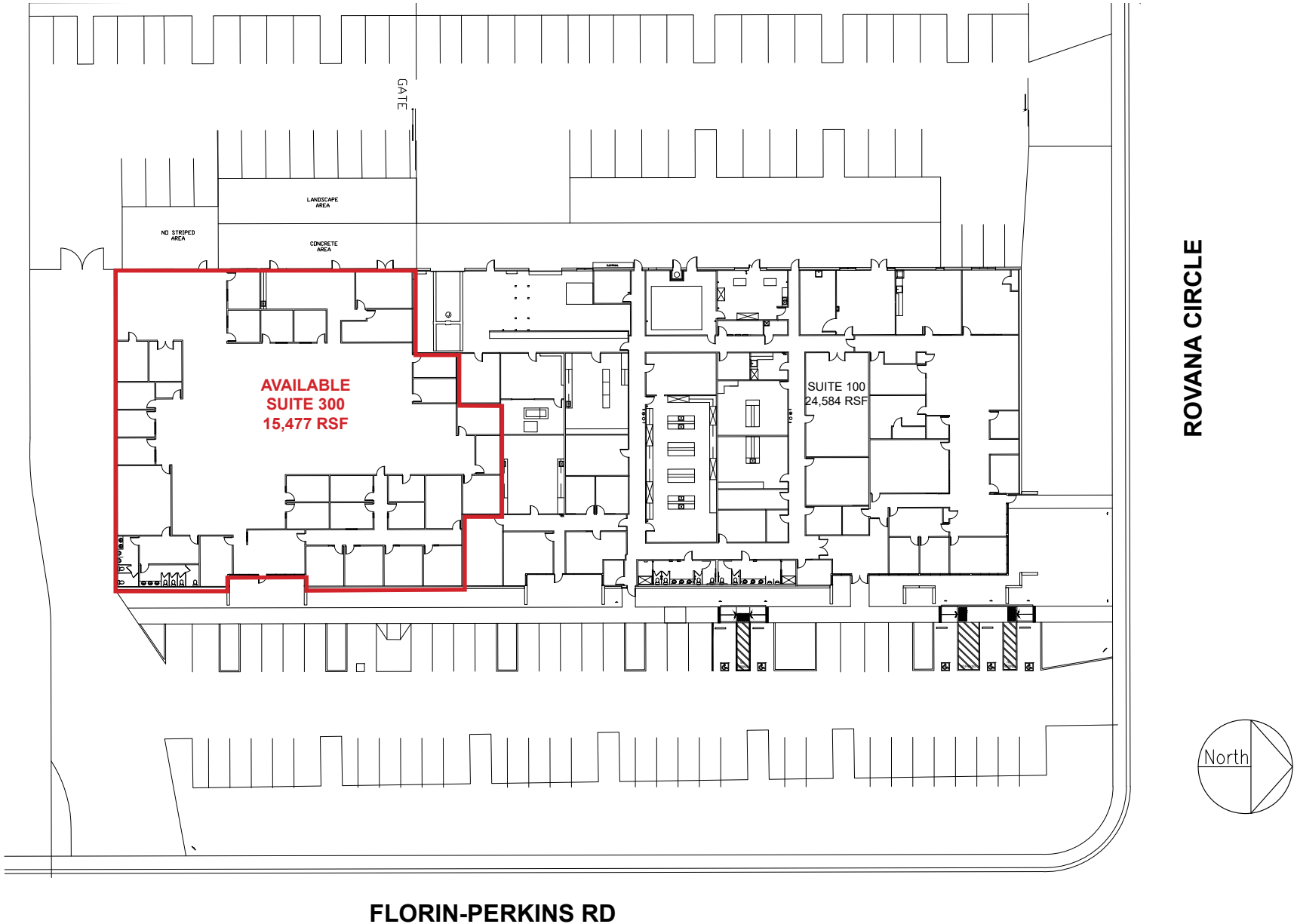


Suite	SF	Lease Rate	Rent
300	15,477	\$1.09 PSF, MG	\$16,837.00



The information contained herein has been obtained from sources we believe to be reliable. However, we cannot guarantee, warrant or represent its accuracy and all information is subject to error, change or withdrawal. An interested party and their advisors should conduct an independent investigation of the property to determine to your satisfaction the suitability of the property for your needs.

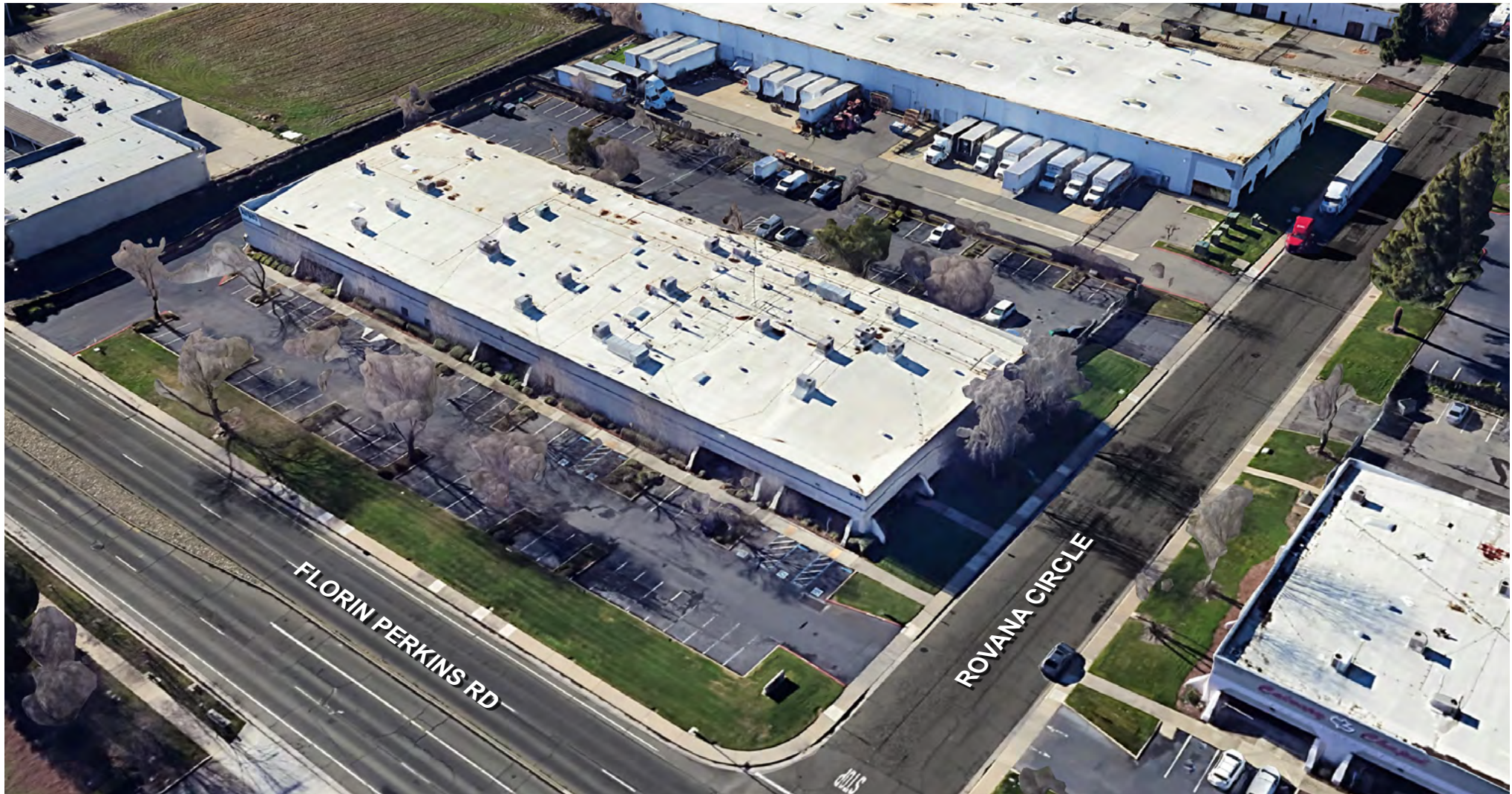
SITE PLAN



The information contained herein has been obtained from sources we believe to be reliable. However, we cannot guarantee, warrant or represent its accuracy and all information is subject to error, change or withdrawal. An interested party and their advisors should conduct an independent investigation of the property to determine to your satisfaction the suitability of the property for your needs.

FOR LEASE

6790 FLORIN-PERKINS RD | OFFICE
SACRAMENTO, CA



ETHAN CONRAD PROPERTIES, INC.

1300 NATIONAL DRIVE, SUITE 100 | SACRAMENTO CA, 95834 | 916.779.1000

www.ethanconradprop.com

The information contained herein has been obtained from sources we believe to be reliable. However, we cannot guarantee, warrant or represent its accuracy and all information is subject to error, change or withdrawal. An interested party and their advisors should conduct an independent investigation of the property to determine to your satisfaction the suitability of the property for your needs.

PAGE

5