

**1010 HURLEY WAY
SACRAMENTO, CA**

FOR LEASE

1,555 RSF - 6,895 RSF AVAILABLE

ETHAN CONRAD
PROPERTIES INC.

**MAJOR REMODEL COMPLETE
RENT REDUCED!**

1010 Hurley

1010 HURLEY PARKING →

VIEW VIRTUAL TOUR

FOR MORE INFORMATION CONTACT:

Todd Newburn

DRE: #01226238

newburn@ethanconradprop.com

Grant Keeney

DRE: #00891996

grant@ethanconradprop.com

916.779.1000

ETHAN CONRAD PROPERTIES, INC
1300 NATIONAL DRIVE, SUITE 100 | SACRAMENTO CA, 95834 | 916.779.1000
www.ethanconradprop.com

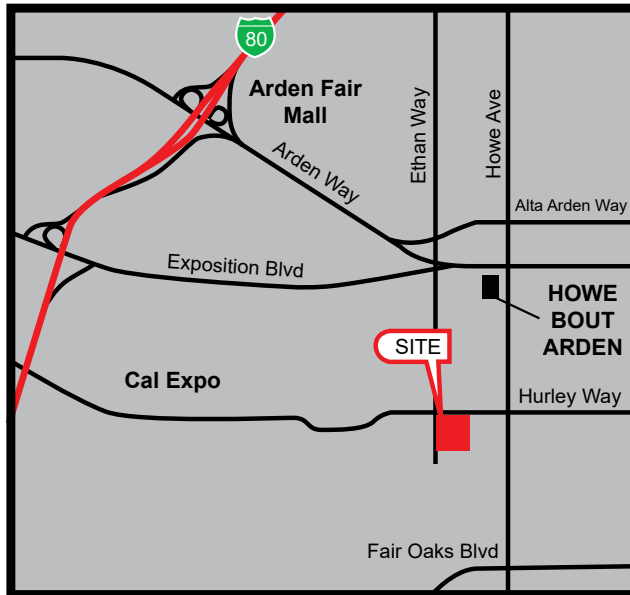
FEATURES:

- Immediate occupancy available
- Well landscaped two-story lobbies
- On-site amenities include conference room
- Abundant 4.4/1,000 SF parking ratio, additional parking available, 10/1,000 SF
- After hours secured areas
- Building signage available

PROPERTY DETAILS:

Proximate to many retail and restaurant options including Arden Fair Mall and the updated Howe Bout Arden. Minutes from Cal Expo.

Excellent central location with access to Hwy 80 and Hwy 50.



LEASE RATES:

Suite 105	±1,948 RSF	\$1.49 RSF/MO
Suite 180	±2,210 RSF	\$1.49 RSF/MO
Suite 190	±1,555 RSF	\$1.49 RSF/MO
Suite 200	±1,831 RSF	\$1.59 RSF/MO
Suite 205	±2,056 RSF	\$1.59 RSF/MO
Suite 215	±2,144 RSF	\$1.59 RSF/MO
Suite 220	±4,157 RSF	\$1.59 RSF/MO
Suites 205/215	±4,200RSF	\$1.59 RSF/MO
Suite 410	±4,090 RSF	\$1.49 RSF/MO
Suite 445	±6,788 RSF	\$1.49 RSF/MO
Suite 505	±6,895 RSF	\$1.49 RSF/MO
Suite 510	±1,843 RSF	\$1.59 RSF/MO
Full Service Gross.		

ETHAN CONRAD PROPERTIES, INC.

1300 NATIONAL DRIVE, SUITE 100 | SACRAMENTO CA, 95834 | 916.779.1000

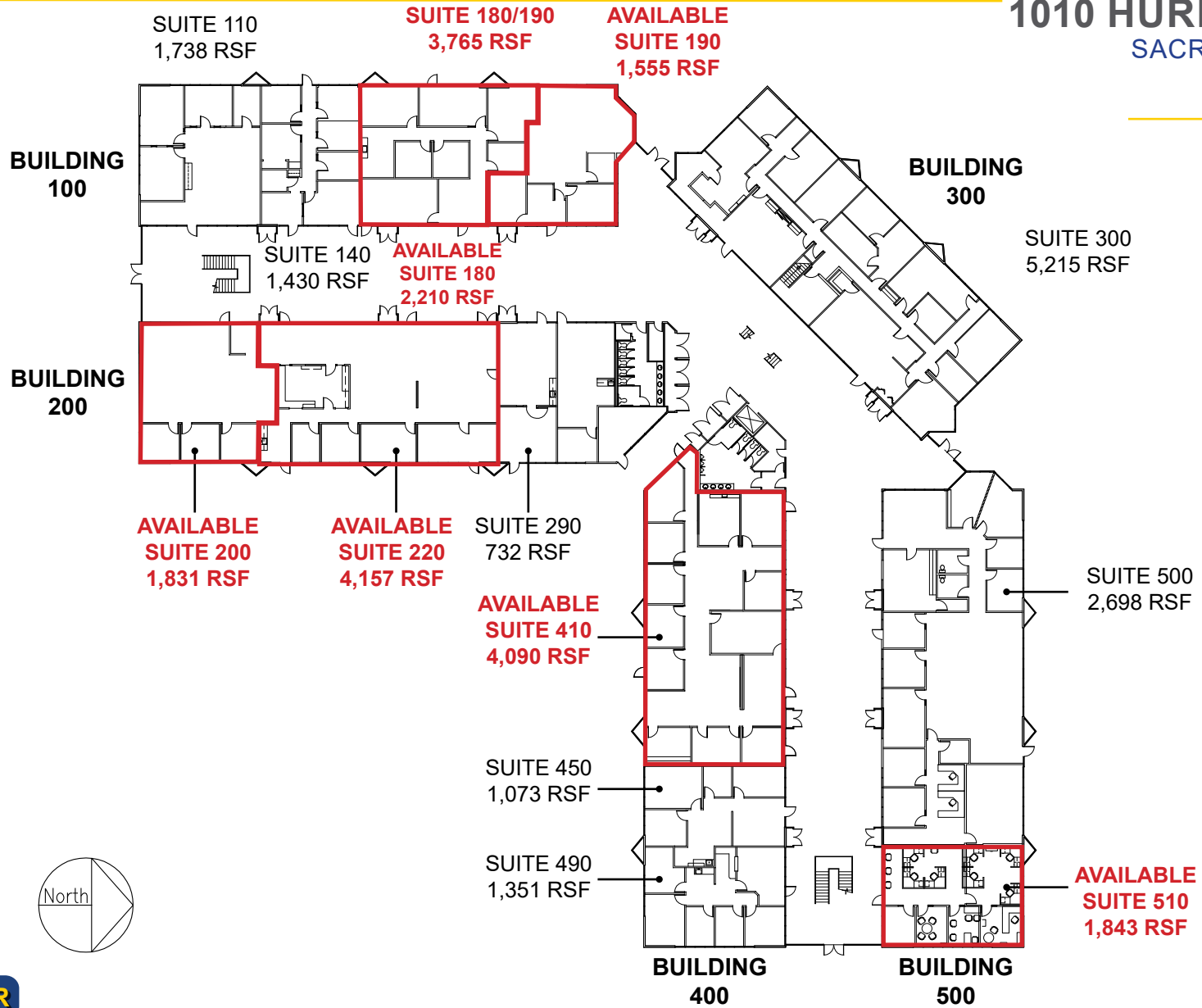
www.ethanconradprop.com

The information contained herein has been obtained from sources we believe to be reliable. However, we cannot guarantee, warrant or represent its accuracy and all information is subject to error, change or withdrawal. An interested party and their advisors should conduct an independent investigation of the property to determine to your satisfaction the suitability of the property for your needs.

FOR LEASE

1010 HURLEY WAY
SACRAMENTO, CA

1ST FLOOR



VIEW VIRTUAL TOUR

ETHAN CONRAD PROPERTIES, INC.

1300 NATIONAL DRIVE, SUITE 100 | SACRAMENTO CA, 95834 | 916.779.1000

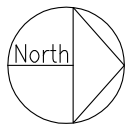
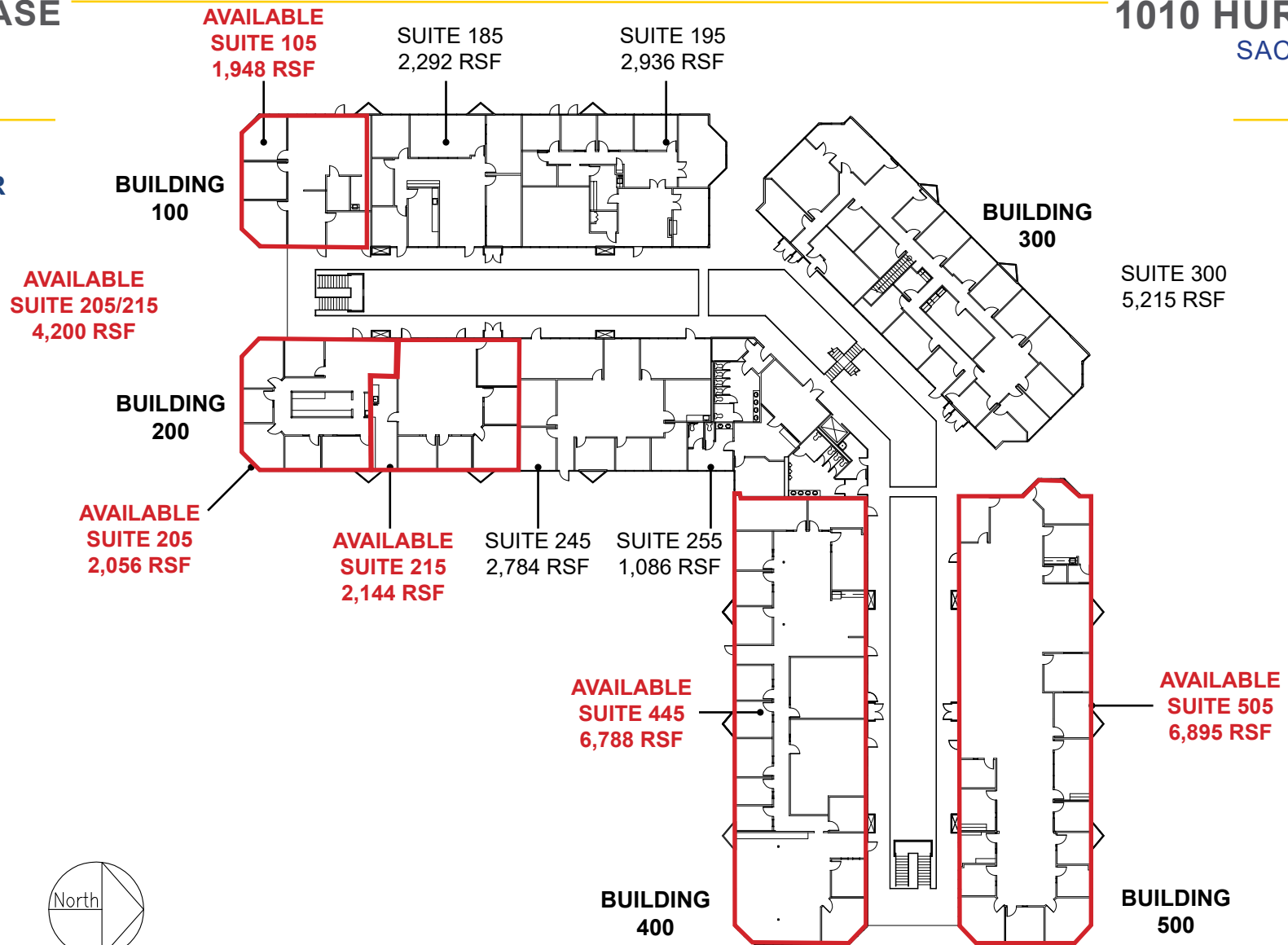
www.ethanconradprop.com

The information contained herein has been obtained from sources we believe to be reliable. However, we cannot guarantee, warrant or represent its accuracy and all information is subject to error, change or withdrawal. An interested party and their advisors should conduct an independent investigation of the property to determine to your satisfaction the suitability of the property for your needs.

PAGE

3

2ND FLOOR



[VIEW VIRTUAL TOUR](#)

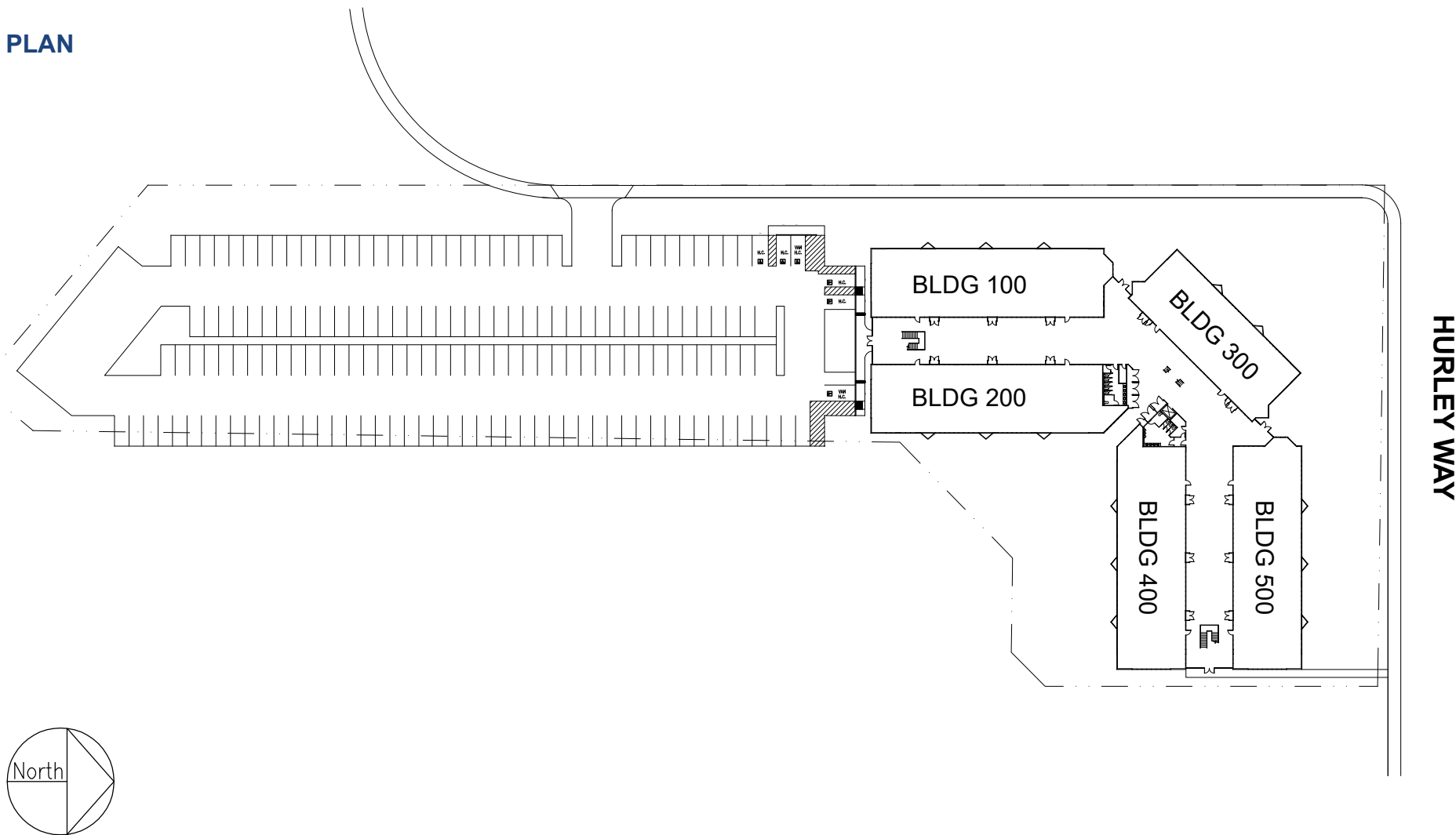
ETHAN CONRAD PROPERTIES, INC.

1300 NATIONAL DRIVE, SUITE 100 | SACRAMENTO CA, 95834 | 916.779.1000

www.ethanconradprop.com

The information contained herein has been obtained from sources we believe to be reliable. However, we cannot guarantee, warrant or represent its accuracy and all information is subject to error, change or withdrawal. An interested party and their advisors should conduct an independent investigation of the property to determine to your satisfaction the suitability of the property for your needs.

SITE PLAN



ETHAN CONRAD PROPERTIES, INC.

1300 NATIONAL DRIVE, SUITE 100 | SACRAMENTO CA, 95834 | 916.779.1000

www.ethanconradprop.com

The information contained herein has been obtained from sources we believe to be reliable. However, we cannot guarantee, warrant or represent its accuracy and all information is subject to error, change or withdrawal. An interested party and their advisors should conduct an independent investigation of the property to determine to your satisfaction the suitability of the property for your needs.



ETHAN CONRAD PROPERTIES, INC.

1300 NATIONAL DRIVE, SUITE 100 | SACRAMENTO CA, 95834 | 916.779.1000

www.ethanconradprop.com

The information contained herein has been obtained from sources we believe to be reliable. However, we cannot guarantee, warrant or represent its accuracy and all information is subject to error, change or withdrawal. An interested party and their advisors should conduct an independent investigation of the property to determine to your satisfaction the suitability of the property for your needs.